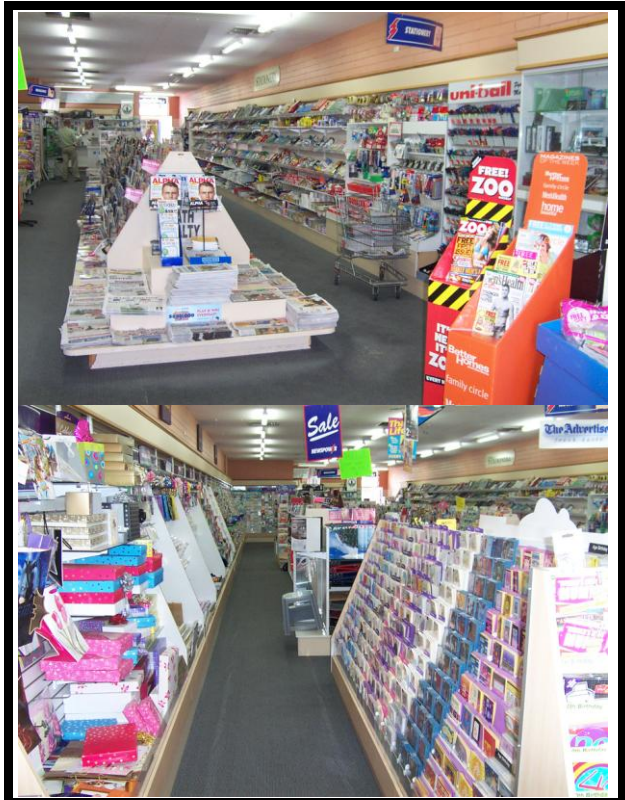
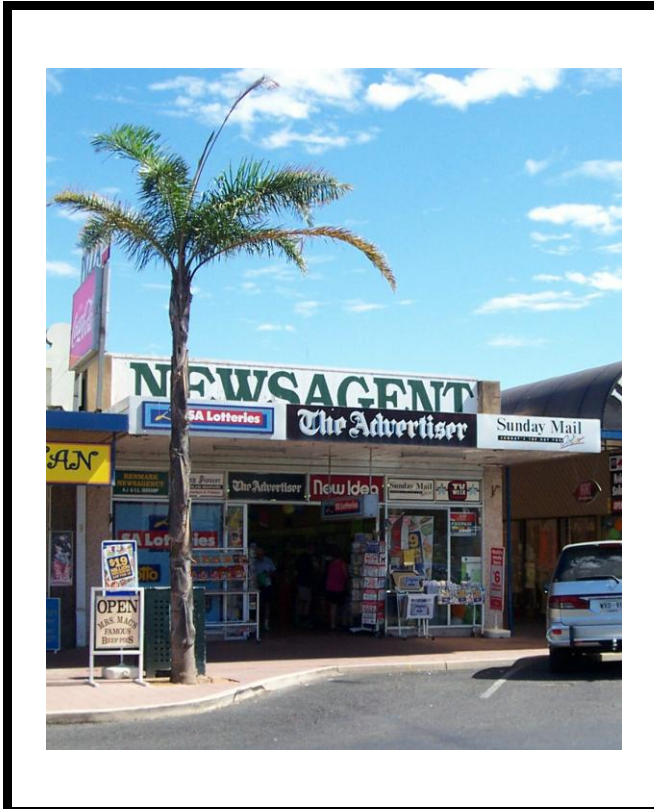


# NASA SERVICES PTY LTD



## RIVERLAND

**\$390,000 PLUS S.A.V.**



- Trading 5 days per weekday & 2 half days Saturday and Sunday.
- Consistent performance, managed by husband & wife with support staff.
- Staff consists of: 5 casuals in retail and 1 casual in home delivery
- Computer-based point of sale system.
- Agencies include: SA Lottery Commission  
(Agency transfers subject to approval by relevant Authorities)
- Distribution component services ten sub-agents.

Continued.....

- Approx. Home Delivery per week: 1,370 Advertisers Mon.-Fri. (3 hours per day); 250 Advertisers Saturday (3.5 hours); 295 Sunday Mails (2.5 hours); Local Paper 600.
- Approx. Sub-agent sales: 1,352 Advertisers Mon.-Fri.; 317 Advertisers Saturday; 307 Sunday Mails; Local paper 1,510.
- Plus home delivered Magazines and sub-agent sales.
- Average Sales Turnover 1/7/08 to 30/6/09 = \$14,990 per week.
- Plus Lottery Commission \$987 per week.
- Stock At Valuation approx. \$95,000.
- Lease: A five year lease commencing on settlement date plus one right of renewal for five years will be offered to an approved purchaser.

A comprehensive Sales Brochure for this business is available by contacting:

**Beverley Osborne**

MANAGER

NASA Services Pty. Ltd. Licensed Land and Business Agent **RLA 1298** M.R.E.I.

Telephone : **(08) 8346 6415** Facsimile : **(08) 8340 1766** Email : **businessbrokers@newsagentsservices.com.au**  
116 Grange Road, Allenby Gardens S.A. 5009 : PO Box 257, Welland S.A. 5007