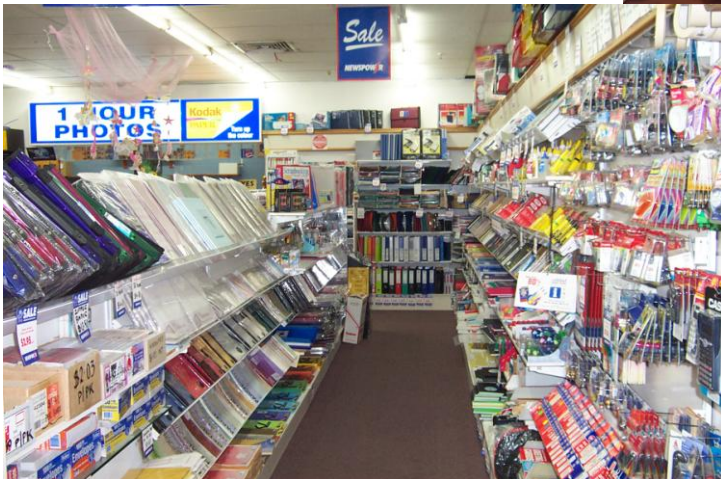


NASA SERVICES PTY LTD



NORTHERN REGIONAL CITY

\$230,000 PLUS S.A.V.





- Trading SIX days per week.
- Consistent performance, managed by one vendor.
- Staff consists of: 77 hours of casual staff
- Computer-based point of sale system.
- Agencies include:
 - SA Lottery Commission
 - Phonecards
 - Kodak Photo Processing(Agency transfers subject to approval by relevant Authorities)
- Average Sales Turnover 1/7/08 to 30/6/09 = \$9,108 per week.
- PLUS Lottery Commissions of \$1,990 per week.
- Stock At Valuation approx. \$115,000
- Lease: Existing lease expires October 2010 - new lease may be negotiated by approved purchaser.

A comprehensive Sales Brochure for this business is available by contacting:

Beverley Osborne
MANAGER

NASA Services Pty. Ltd. Licensed Land and Business Agent **RLA 1298 M.R.E.I.**
Telephone : **(08) 8346 6415** Facsimile : **(08) 8340 1766** Email : **businessbrokers@newsagentsservices.com.au**
116 Grange Road, Allenby Gardens S.A. 5009 : PO Box 257, Welland S.A. 5007